



MEN / TEE-SHIRT
STANLEY SHIFTS DRY

 70 per box

STTM558

Round neck long sleeve dry tee-shirt

Single jersey
100% Organic ring-spun Combed Cotton
200 GSM

- Set-in sleeve
- 1x1 rib at neck collar and sleeve hem
- Inside back neck tape in self fabric
- Bottom hem with wide double topstitch

MEDIUM FIT

S M L XL XXL

Size guide

WHITES



WHITE

COLORS



BLACK



CAMEL



FRENCH NAVY



BURGUNDY

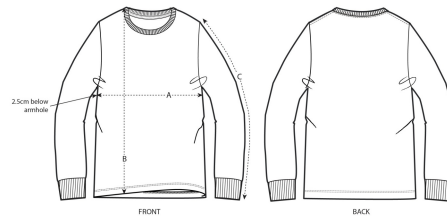


BRITISH KHAKI

ESSENTIAL HEATHERS



HEATHER GREY



SIZES		S	M	L	XL	XXL
A	Half Chest	48.5	51.5	54.5	57.5	60.5
B	Body Length	70	73	75	77	79
C	Sleeve Length	65.5	66.5	67.5	68.5	69.5

Printing Specifications

Fits all kinds of printing techniques, click here to get more info.

