



The women's zip thru hoodie sweatshirt

Medium Fit

XS > XXL

300 GSM

Details

- Set-in sleeves
- Dropped shoulders
- Double layered hood in self fabric
- Flat drawcord in matching body colour
- Embroidered eyelet
- Covered metal zipper at center front
- 1X1 ribs at collar, sleeves cuffs and bottom hem
- 2 needles topstitches on all seams
- Inside gros grain back neck tape
- Self fabric halfmoon at back neck

Composition

Shell - Brushed
 100% Cotton - Organic Ring Spun Combed - 300 GSM
 Fabric washed

Care

Wash similar colours together, no ironing on print, wash and iron inside out.



Country of origin

Weaving : Bangladesh
 Dyeing : Bangladesh
 Assembly : Bangladesh



Original
 Certified by Control Union
 of Leuven



www.oeko-tex.com



Whites



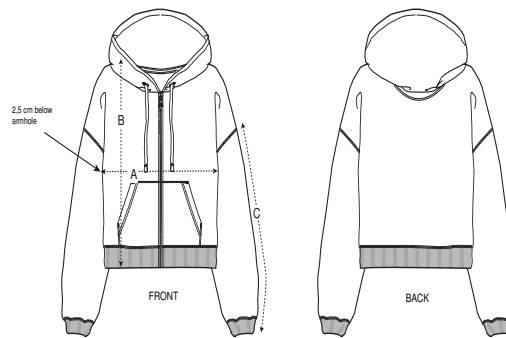
Colors



Essential Heathers



Size Guide



Sizes		XS	S	M	L	XL	XXL
A	Half Chest	57	60	63	66	69	73
B	Body Length	54	57	59	61	63	65
C	Sleeve Length	46	47.5	49	50.5	52	52

Packing

Sizes		XS	S	M	L	XL	XXL
	Pieces/bag	5	5	5	5	5	5
	Pieces/box	20	20	20	20	20	20