

KARIBAN

REFERENCE : K962

NAME :

SIZES : XS_S_M_L_XL_XXL_3XL

COMPOSITION :

Main fabric : Jersey knit Cotton/Acrylic 50/50 - 290
50%cotton/50%acrylic

COLORS	PANTONE SERIGRAPHIE
Black	Black
Grey melange	Cool gray 7C
Navy	2965C

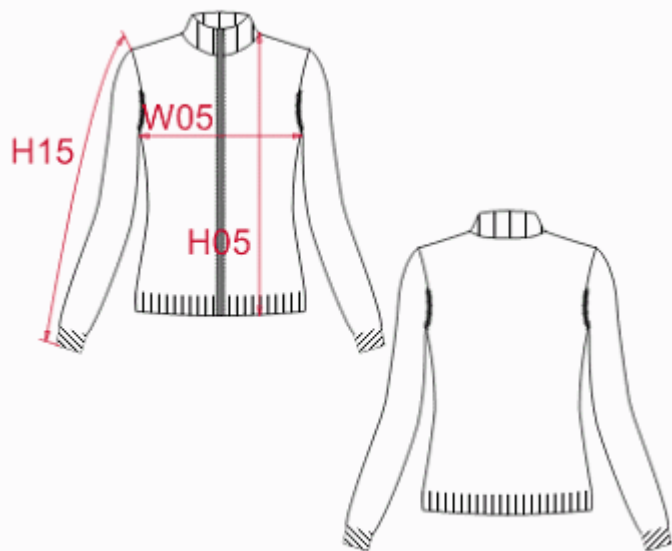
WEIGHT :

Main fabric : ± 290 gsm

FABRIC CONSTRUCTION AND FINISHING :

Gauge 12gg

DESCRIPTION	
Français :	Cardigan femme zippé
English :	Ladies' zip cardigan
Nederlands :	Dames vestje met rits
Deutsch :	Damen strickjacke
Español :	Chaqueta con cremallera para mujer
Italiano :	Cardigan donna full zip
Português :	Casaco de malha de senhora



MEASUREMENT							
Description	XS	S	M	L	XL	2XL	3XL
H05 Hauteur totale / Total height	60	61,50	63	64,50	66	67,50	69,50
W05 1/2 largeur poitrine / 1/2 chest width	44	46	48	50	52	54	57
H15 Longueur manche / Sleeve length	59	60	61	62	63	64	65

PACKING	
Box	10 pcs / box XS-M => L:55cm W:35cm H:19cm GW:4.80kg NW:3.40kg L-XL => L:60cm W:37cm H:19cm GW:5.40kg NW:3.90kg XXL-3XL => L:65cm W:39cm H:19cm GW:5.90kg NW:4.40kg

CARE LABEL				