

KARIBAN

1/2

REFERENCE : K544

NAME :

SIZES : XS_S_M_L_XL_XXL_3XL_4XL

COMPOSITION :

Main fabric : Cotton poplin 120 100%cotton

Main fabric : Cotton poplin 125 100%cotton

WEIGHT :

Main fabric : 120 gsm

Main fabric : 125 gsm

FABRIC CONSTRUCTION AND FINISHING :

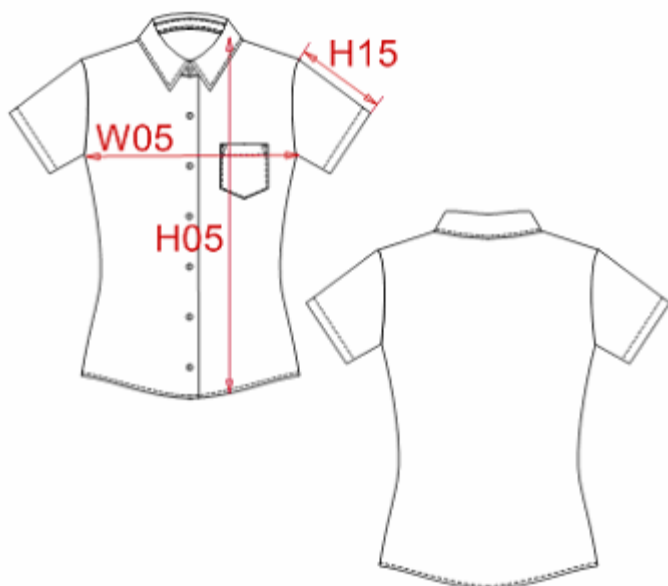
Resin coating for easier ironing

| COLORS | PANTONE SERIGRAPHIE |
|-------------|------------------------|
| White | White |
| Black | Black |
| Navy | 296C |
| Classic red | 200C |
| Zinc | 447C |
| Bright sky | 2708C |

DESCRIPTION

- Français :** Chemise femme manches courtes
English : Ladies short sleeve easy care cotton poplin shirt
Nederlands : Dames blouse met korte mouwen
Deutsch : Pflegeleichte baumwolle popeline damen kurzarm bluse
Español : Camisa de manga corta para mujer
Italiano : Camicia donna maniche corte popeline
Português : Camisa de senhora manga curta em popeline tratamento fácil

CARE LABEL



MEASUREMENT

| Description | XS | S | M | L | XL | 2XL | 3XL | 4XL | | |
|---|-------|-------|-------|-------|-------|-------|-------|-------|--|--|
| W05 1/2 largeur poitrine / 1/2 chest width | 46 | 48 | 50 | 53 | 56 | 59 | 62 | 65 | | |
| H15 Longueur manche / Sleeve length | 18,50 | 19,50 | 20,50 | 21,60 | 22,75 | 23,85 | 25 | 26,10 | | |
| H05 Hauteur totale dos / Back total height | 62,65 | 64,20 | 65,75 | 67,70 | 69,60 | 71,55 | 73,45 | 75,40 | | |

PACKING

| Box | |
|-----|--|
| | 12 pcs / box |
| | XS => L:52cm W:34cm H:20cm GW:3.10kg NW:1.80kg |
| | S => L:52cm W:34cm H:20cm GW:3.20kg NW:1.90kg |
| | M => L:52cm W:34cm H:20cm GW:3.30kg NW:2.00kg |
| | L => L:52cm W:34cm H:20cm GW:3.40kg NW:2.10kg |
| | XL => L:52cm W:34cm H:20cm GW:3.50kg NW:2.20kg |
| | XXL => L:52cm W:34cm H:20cm GW:3.60kg NW:2.30kg |
| | 3XL => L:52cm W:34cm H:20cm GW:3.70kg NW:2.40kg |
| | 4XL => L:52cm W:34cm H:20cm GW:3.80kg NW:2.50kg |